

# Introduction of TYM Fund

## Background

In August 1992, with the whole hearted assistance by Dr. Jaime Aristole B. Alip, a FAO's credit advisor, the Vietnam Women's Union started a savings and credit fund named "Tau Yeu Mai" (TYM) which was directed to the poor and hard-core poor women to facilitate their income generating activities. The TYM Fund is patterned after the Grameen Bank model in Bangladesh. Also in 1992, the TYM Fund received the permission **No 563** dated 20 February 1992 by the Government to implement the project in the poor regions.

In Feb. 1994, TYM joined CASHPOR and became a member in

the big family of Grammen replications. As a member of CASHPOR, TYM has chance to access CASHPOR technical assistance and training workshops.

## **Mandate**

The Tau Yeu Mai Fund is committed to improving the quality of life of poor women and their families by implementing a unique banking system that will consistently provide women opportunities to form savings groups, allowing them to participate in productive activities to increase their income and savings and improve technical and entrepreneurial skills while upholding the values of discipline, unity, and hard work.

# Objectives

1. Consolidate, strengthen and upgrade TYM Fund to be a credit fund for poor women
2. Implement socio-economic activities to bring economic and social benefits, improve and enhance the status of women as well as community's life.
3. Organize training to unceasingly advance the awareness, attitude and capacity of the project staff at all levels.
4. Encourage and promote the relations between the local authorities and agencies concerned
5. Step by step expand the project's coverage area, set up new branches in poor region to

assist as many poor women in many localities as possible.

6. Involve poor women to join the VWU and participate in the VWU's activities.

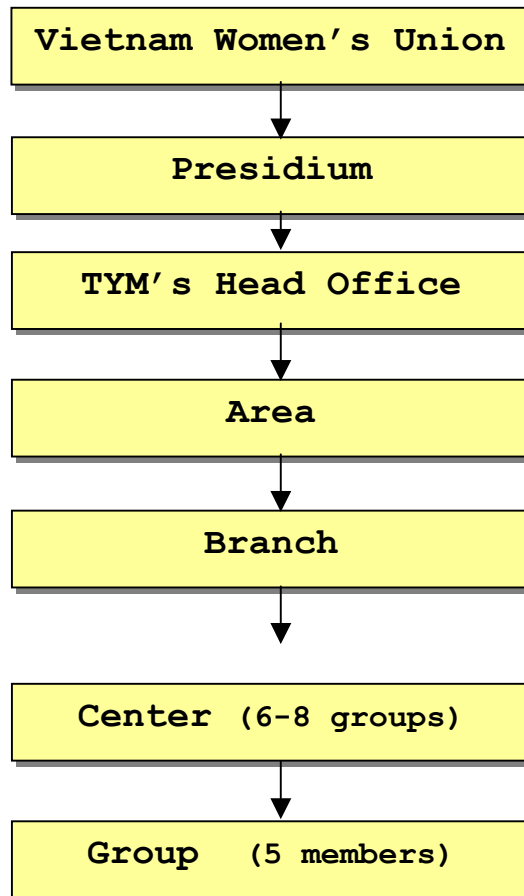
## **Target group**

The Fund target poor regions and poor communes with 50% of the population living in poverty. At present, the criteria for a woman eligible to be TYM member is:

- Average income per capita per month is equal to or less than **100.000** VND
- Total value of the household asset is equal to or less than **15,000,000** VND



# Organizational system



## **Weekly meeting**

For weekly meeting, women members decide the meeting schedule at a certain time in a certain day and at a certain place.

Weekly meeting aims to facilitate members to fulfill their members obligations in weekly payments, loan appraisal, loan utilization check etc. At the meeting, women members have chance to access to agricultural extension information, health care knowledge, sharing experience and information on market, production, and enjoy cultural activities of poems and songs.

In TYM now, most of the centers organize weekly meeting at soon and TYM is now encouraging centers to have meetings in the morning.